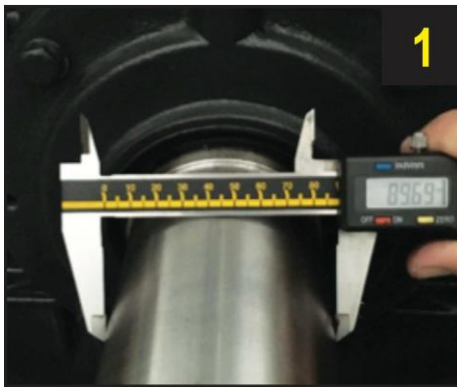


# ARC QUICK START ADJUSTABLE GUIDE

The ARC is the worlds' first fully adjustable Shaft Grounding Ring, these instructions are designed to make adjustment easy and fast, even for a novice.

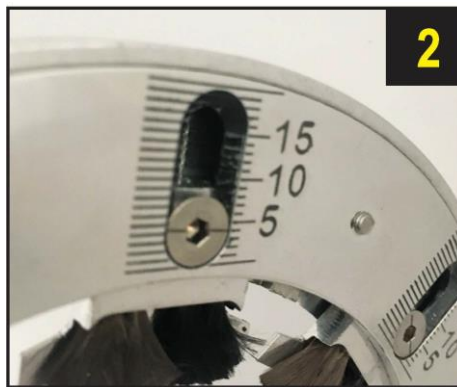
The goal when adjusting the ARC Earthrings, is to make sure that all the "Highly Conductive Fibre Holders" are equally centralized and are all 1 mm away from the shaft surface, therefore each Aluminium Brush Holder (not the fibre) has a 1 mm gap from the shaft.

To make life easier we have made sure that there is a 0.5mm to 1 mm tolerance on each Highly Conductive Fibre Holder, so even if you are not perfect or if you are finding it difficult to obtain an odd number setting (such as 21 mm) and can't seem to get that perfect it is okay, **DON'T STRESS** you can be up to 1mm off on your adjustment of the Highly Conductive Fibre Holders and the fibres will still make contact with the shaft perfectly.

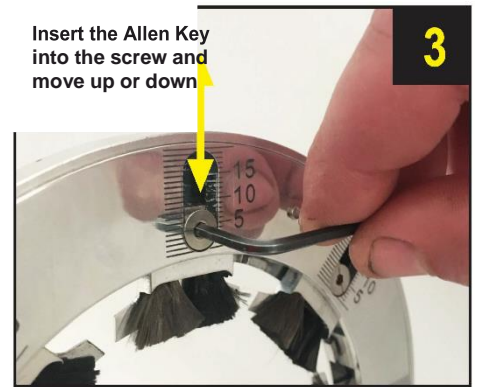


1. Measure the Shaft Diameter and choose the correct size "ARC Earthing" to fit your size of shaft diameter (e.g. for 90mm shaft diameter you would choose the "ARC 80 to 100mm"). Then check the "ARC Chart" of that size ARC Earthing in Imperial or Metric sizes, choose a size 2mm\* larger than your shaft size (e.g. if your shaft is measured at 90mm you would choose 92mm) and see the corresponding "ARC LINE" number on that chart, record this number, or the closest number to it. .

2. \*This 2mm addition (to the shaft diameter you measured) ensures there will be a 1mm gap between all the Aluminium brush holders and the rotating shaft, at the end of these instructions.



At the back of the "ARC" ring you will see the "ARC LINES" numbered 1 to 15, your goal is to move the line on the Hexagonal counter sunk screw to the correct "ARC line" number (the number you previously recorded from the ARC LINE CHART), or as close to that number as possible. (Don't worry, you will fine tune later with a Vernier)



Insert the Allen key into the counter sunk screw, loosen and ensure the Line on the screw is horizontal with the 1 to 15 lines on the back, then use the Allen key as a lever to move the screw up or down until the horizontal line on the screw is in line with the number you want. Do this with all the "Highly Conductive fibre holders".



From the front all the "Highly Conductive Fibres Holders" should look even and circular.



Using a Vernier measure all the "Highly Conductive Fibre Holders" diagonally opposite one another, it should measure a diameter of approximately 2mm larger than the shaft size. (e.g. for a 90mm shaft size you should measure close to 92mm diameter for each set of holders.



Using a "Feeler Gauge" to check the gap between each of the "Highly conductive fibre holders" and the shaft, a gap anywhere from 0,7mm to 1,3mm is acceptable.

## NOW YOU ARE READY TO INSTALL THE EARTH RING

# ARC QUICK START ADJUSTABLE GUIDE

Position	ARC LV Sizing Chart Metric						
	20mm to 40mm	40mm to 60mm	60mm to 80mm	80mm to 100mm	90mm to 110mm	100mm to 120mm	120mm to 140mm
3	20	40	60	80	90	100	120
4	22	42	62	82	92	102	122
5	24	44	64	84	94	104	124
6	26	46	66	86	96	106	126
7	28	48	68	88	98	108	128
8	30	50	70	90	100	110	130
9	32	52	72	92	102	112	132
10	34	54	74	94	104	114	134
11	36	56	76	96	106	116	136
12	38	58	78	98	108	118	138
13	40	60	80	100	110	120	140

Position	ARC HV Sizing Chart Metric						
	120mm to 140mm	140mm to 160mm	160mm to 180mm	180mm to 200mm	200mm to 220mm	220mm to 240mm	240mm to 260mm
3	120	140	160	180	200	220	240
4	122	142	162	182	202	222	242
5	124	144	164	184	204	224	244
6	126	146	166	186	206	226	246
7	128	148	168	188	208	228	248
8	130	150	170	190	210	230	250
9	132	152	172	192	212	232	252
10	134	154	174	194	214	234	254
11	136	156	176	196	216	236	256
12	138	158	178	198	218	238	258
13	140	160	180	200	220	240	260

